



MY FLAME
LIFESTYLE
COLLECTION S/S 2025



From Amsterdam, with love

Dance the night away



Home is where the furry socks are



So egg-cited! Spring is here!



Hooray!! let's partayy



Mothers♥





We wish you a fabulous season! -xo-



Step into the world of My Flame Lifestyle, where we blend fun, style, and sustainability to elevate your everyday rituals. Based in the Netherlands, My Flame Lifestyle is all about creating feel-good moments with products that care for both people and the planet.

In this edition of our biannual catalogue, we bring you the very best of spring and summer: think breezy scents, playful designs, and warm, sunny vibes. From our organic soy wax candles that light up your evenings to beautifully crafted vegan care items with a cheeky twist, every product is designed to spark joy and inspire relaxation.

Besides our beloved collection of continuous bestsellers, we're thrilled to introduce some exciting new creations for Spring/Summer 2025! Our Double Wall Candles are a standout addition, featuring delicate flowers pressed between the glass walls. Not only do they look stunning while they burn, but once the candle is finished, the glass transforms into a charming teacup—practical and beautiful.

For special occasions like Mother's Day and Easter, we've designed a delightful new line of candles. Have you ever seen candles that look like cracked eggs before? Well, now you have—and we think you'll love them just as much as we do!

When the summer heat kicks in, our Outdoor Candle Collection will be your go-to for cozy evenings under the stars. And for those who love a splash of color, check out our brand-new Colorful Candles. Perfect as a small gift, an add-on, or a little treat for yourself, these vibrant candles are sure to brighten any moment.

Let's celebrate the brighter days ahead—sustainably, stylishly, and always with a touch of fun!

Happy browsing!

With love,

Femke de Boer & Annefiet Brandjes
Founders





From Amsterdam, with love



5	SOY CANDLES
	6. MASSAGE CANDLES
	7. DOUBLE WALL FLOWER CANDLES
	8. COLORFUL MINI CANDLES
	9. CANDLES WITH MESSAGE BOTTLE INSIDE
	10. OUTDOOR CANDLES
	12. LOVE COLLECTION
	13. EASTER COLLECTION
	14. MOTHER'S DAY COLLECTION
	15. CANDLES WITH A HUG INSIDE
	16. HIDDEN MESSAGE CANDLES
	17. CANDLES WITH WAXED CHARM INSIDE
	18. WINE CANDLES
	20. CANDLES WITH WISH BRACELET
	22. QUOTES BY INSPIRATORS COLLECTION
	23. CANDLES WITH CRYSTAL ROCK INSIDE
24	MATCHES IN A BOTTLE
26	MORE SOY CANDLES
	26. MATT/ METALLIC CANDLES
29	ROUNDTABLE ON RESPONSIBLE SOY ASSOCIATION
30	EVEN MORE SOY CANDLES
	30. WOODEN WICK & 2-WICK CANDLES
	32. CORKED CANDLES
	34. WOODEN WICK & 3-WICK CANDLES
	36. MINI CANDLES
	38. TIN CANDLES
40	AMNESTY INTERNATIONAL
43	BATH & BODY
	43. CONFETTI HAND SOAP
	44. HAND SOAP & HAND CREAM GIFTBOX
	45. LIQUID HAND SOAP BATH SALT & BATH BOMBS
	46. BODY WASH BAR
	47. VEGAN BODY SCRUB
	48. BATH SALTS & BATH BOMBS
	49. LIP BALM & HAND CREAM
53	HOME FRAGRANCES
55	FRAGRANCE LIST
58	DISPLAYS
59	LET'S CONNECT

SOY CANDLES

We love the soft touch of soy wax and its organic properties. As it's all plant wax, thus vegan, they hardly spread any soot, they burn up to 45% longer compared to regular candles and they have a better scent throw due to their lower burning point. We would also like to share a fun fact; when the candle has burned for a little while, you can use the liquid wax as hand cream for dry hands. You can blow out the candle and pour the wax right into your hands. Massage the wax into your hands et voila, you have a great moisturizer for the day. Additionally, soy candles are better for the environment as they're made of soy beans instead of crude oil. Our soy beans come from RTRS certified plantations (more information on page 29) for which no rain forests are harmed and the beans are non-GMO. These candles are a must-have in every home.



Massage Candles

RELAX. I GOT YOUR BACK



SKU: MA.016.06A
Scent: Lavender Fields
Size: D.6.5 x H.7 cm
Quantity: 6



SKU: MA.016.06B
Scent: Calming Sandalwood
Size: D.6.5 x H.7 cm
Quantity: 6



SKU: MA.016.06D
Scent: Calming Sandalwood
Size: D.6.5 x H.7 cm
Quantity: 6



Light the candle



Pour the liquid wax into hand



Chill mode on

- SOY CANDLES -
DOUBLE WALL WITH FLOWERS

Tea and Flower Lovers Alert!

oh, yes.... and candle lovers too

These scented candles feature a double wall with dried flowers between the glass walls. But, they are not only candy for the eye. After the candle has burned down, you can easily clean the cup and use it for tea or any other hot or cold drink with its thermal properties.



Burn the candle



Clean the cup



Enjoy your hot cup of tea



SKU: GL.DWF.022.04
Scent: Green Tea Time
Size: D.11.5 x H.8 cm
Quantity: 4



SKU: GL.DWF.022.07
Scent: Silky Tonka
Size: D.11.5 x H.8 cm
Quantity: 4



SKU: XC.CFS.021.01
Scent: Warm Cashmere
Size: D.5.5 x H.6 cm
Quantity: 8



SKU: XC.CFS.021.03
Scent: Amber's Secret
Size: D.5.5 x H.6 cm
Quantity: 8



SKU: XC.CFS.021.04
Scent: Green Tea Time
Size: D.5.5 x H.6 cm
Quantity: 8



SKU: XC.CFS.021.02
Scent: Minty Bamboo
Size: D.5.5 x H.6 cm
Quantity: 8



SKU: XC.CFS.021.06
Scent: Fresh Cotton
Size: D.5.5 x H.6 cm
Quantity: 8



SKU: XC.CFS.021.05
Scent: Fig's Delight
Size: D.5.5 x H.6 cm
Quantity: 8





Meet our Drift-Bottle-Candles Collection. Inside the wax, you will find a corked bottle with a message inside.



- SOY CANDLES -

WISHING YOU LOTS OF
JOY & HAPPINESS ♥



SKU: GL.MB.003.01
Scent: Warm Cashmere
Size: D.9 x H.5 cm
Quantity: 4

YOU ARE THE BEST



SKU: GL.MB.003.03
Scent: Amber's Secret
Size: D.9 x H.5 cm
Quantity: 4

COUPON FOR: BIG HUG
UNLIMITED USES ♥

BESTSELLER



SKU: GL.MB.003.04
Scent: Green Tea Time
Size: D.9 x H.5 cm
Quantity: 4

WISHING YOU LOTS OF
JOY & HAPPINESS ♥



SKU: GL.MB.003.06
Scent: Fresh Cotton
Size: D.9 x H.5 cm
Quantity: 4

PEOPLE YOUR AGE
LOOK SO MUCH OLDER



SKU: GL.MB.003.05
Scent: Fig's Delight
Size: D.9 x H.5 cm
Quantity: 4

Outdoor Candles



SKU: OUT.8850.LGRY
Scent: Bella Citronella
Size: D.9 x H.5 cm
Quantity: 6



SKU: OUT.8850.GRN
Scent: Bella Citronella
Size: D.9 x H.5 cm
Quantity: 6



SKU: OUT.8850.WH
Scent: Bella Citronella
Size: D.9 x H.5 cm
Quantity: 6



SKU: OUT.8850.SND
Scent: Bella Citronella
Size: D.9 x H.5 cm
Quantity: 6



SKU: OUT.L.004.02
Scent: Bella Citronella
Size: D.11 x H.6 cm
Quantity: 4



SKU: OUT.L.004.03
Scent: Bella Citronella
Size: D.11 x H.6 cm
Quantity: 4



SKU: OUT.L.004.01
Scent: Bella Citronella
Size: D.11 x H.6 cm
Quantity: 4



SKU: OUT.L.004.04
Scent: Bella Citronella
Size: D.11 x H.6 cm
Quantity: 4



Let's go outside
and feel the sunshine



- SOY CANDLES -



SKU: OUT.027.03
Scent: Bella Citronella
Size: D.8 x H.5 cm
Quantity: 8



SKU: OUT.027.04
Scent: Bella Citronella
Size: D.8 x H.5 cm
Quantity: 8



SKU: OUT.027.02
Scent: Bella Citronella
Size: D.8 x H.5 cm
Quantity: 8



SKU: OUT.027.05
Scent: Bella Citronella
Size: D.8 x H.5 cm
Quantity: 8



SKU: OUT.008.04
Scent: Bella Citronella
Size: D.10 x H.12 cm
Quantity: 4



SKU: OUT.008.06
Scent: Bella Citronella
Size: D.10 x H.12 cm
Quantity: 4





Love is all you need

be my Valentine



SKU: GL.1010.LC.22
Scent: Unconditional
Size: D.10 x H.10 cm
Quantity: 4



SKU: GL.CO.LC.22
Scent: Unconditional
Size: D.8 x H.9 cm
Quantity: 4



SKU: GL.RND.LC
Scent: Unconditional
Size: D.7 x H.12 cm
Quantity: 4

NEW

- SOY CANDLES -
CRACKED EGGS



This Easter
is going to be
egg-stra special



with these on the table



SKU: WX.EGG.014.08
Scent: Silky Tonka
Size: D.4.5 x H.5 cm
Quantity: 12



SKU: WX.EGG.014.06
Scent: Fresh Cotton
Size: D.4.5 x H.5 cm
Quantity: 12



SKU: WX.EGG.014.05
Scent: Green Tea Time
Size: D.4.5 x H.5 cm
Quantity: 12



SKU: WX.EGG.014.02
Scent: Minty Bamboo
Size: D.4.5 x H.5 cm
Quantity: 12



SKU: WX.EGG.DISPLAY
Scent: mix
Size: 25 x 25 x 5.5 cm
Quantity: 2



So egg-cited! Spring is here!

- SOY CANDLES -
MOTHER'S DAY



Let's celebrate the awesomeness moms & grandmoms



SKU: WZ.MOTH.023.06B
Scent: Fresh Cotton
Size: D.10 x H.12.5 cm
Quantity: 4

ONLY AVAILABLE IN THE U.K.



SKU: WZ.MAME.023.06A
Scent: Fresh Cotton
Size: D.7 x H.6 cm
Quantity: 6



SKU: WZ.MUMU.023.06C
Scent: Fresh Cotton
Size: D.7 x H.6 cm
Quantity: 6



SKU: GL.8090.MAN
Scent: Fresh Cotton
Size: D.8 x H.9 cm
Quantity: 4



SKU: GL.8090.WRLD
Scent: Fresh Cotton
Size: D.8 x H.9 cm
Quantity: 4



SKU: GL.MB.003.06
Scent: Fresh Cotton
Size: D.9 x H.5 cm
Quantity: 4



- SOY CANDLES -
WITH HUG INSIDE

BESTSELLER



SKU: GL.BE.002.01B
Scent: Warm Cashmere
Size: D.8 x H.9 cm
Quantity: 4

Inside these
candles, one can find
a bear as a token for a hug.
The receiver can easily pull the
bear out of the wax and carry
it with them or put it in a special
place. Every time they see it,
they will be reminded the
giver thinks of them.



SKU: GL.BE.002.01A
Scent: Warm Cashmere
Size: D.8 x H.9 cm
Quantity: 4

NEW



SKU: GL.BE.002.06B-1
Scent: Fresh Cotton
Size: D.8 x H.9 cm
Quantity: 4



SKU: GL.BE.002.06A
Scent: Fresh Cotton
Size: D.8 x H.9 cm
Quantity: 4

NEW



SKU: GL.BE.002.06C-1
Scent: Fresh Cotton
Size: D.8 x H.9 cm
Quantity: 4

- SOY CANDLES -

Hidden message candles

BURN EACH CANDLE FOR 3.5 HOURS AND ITS MESSAGE WILL REVEAL



SKU: SM3.5233.BL
Scent: Warm Cashmere
Size: D.5.2 x H.3.3 cm
Quantity: 6



SKU: SM3.5233.WH
Scent: Fresh Cotton
Size: D.5.2 x H.3.3 cm
Quantity: 6



SKU: SM3.5233.SND
Scent: Fig's Delight
Size: D.5.2 x H.3.3 cm
Quantity: 6



PSST... THE MESSAGES OF THE CANDLES ARE:
Big Hug
Sweet Cuddles
Warm Squeeze
PEEL OFF THIS LABEL BEFORE GIVING



- SOY CANDLES -
WITH WAXED CHARM



SKU: CH.017.03
Scent: Amber's Secret
Size: D.10.7 x H.8 cm
Quantity: 4



SKU: CH.017.04
Scent: Green Tea Time
Size: D.10.7 x H.8 cm
Quantity: 4



SKU: CH.017.02
Scent: Minty Bamboo
Size: D.10.7 x H.8 cm
Quantity: 4



SKU: CH.017.06
Scent: Fresh Cotton
Size: D.10.7 x H.8 cm
Quantity: 4



SKU: CH.017.05
Scent: Fig's Delight
Size: D.10.7 x H.8 cm
Quantity: 4



SKU: CH.017.07
Scent: Silky Tonka
Size: D.10.7 x H.8 cm
Quantity: 4



Happy B-day, Darling -x-



We just love to add something fun to our candles. These candles feature a charm made of wax. Just light the candle and the charm will eventually melt away



WINE FLIES WHEN
YOU'RE HAVING FUN

Stiletto's and wine

- SOY CANDLES -



SKU: GL.WI.007.01
Scent: Warm Cashmere
Size: D.8 x H.11 cm
Quantity: 4



SKU: GL.WI.007.06
Scent: Fresh Cotton
Size: D.8 x H.11 cm
Quantity: 4



SKU: GL.WI.007.07
Scent: Silky Tonka
Size: D.8 x H.11 cm
Quantity: 4

**If you walk a mile in my shoes
you'll end up in a wine bar**



SKU: GL.WI.WH.FLY
Scent: Fresh Cotton
Size: D.5.5 x H.13 cm
Quantity: 4



SKU: GL.WI.GLD
Scent: Silky tonka
Size: D.5.5 x H.13 cm
Quantity: 4



SKU: GL.WI.L.BL
Scent: Warm Cashmere
Size: D.7 x H.15 cm
Quantity: 4



SKU: GL.WI.L.WH
Scent: Fresh Cotton
Size: D.7 x H.15 cm
Quantity: 4



SKU: GL.WI.L.GLD
Scent: Silky Tonka
Size: D.7 x H.15 cm
Quantity: 4

- SOY CANDLES -



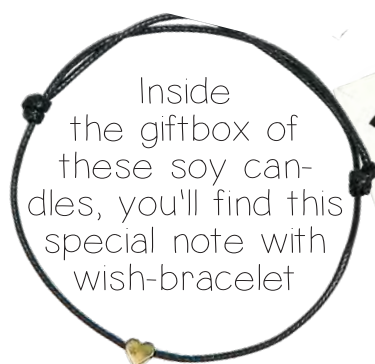
BESTSELLER

SKU: WBR.006.01
Scent: Warm Cashmere
Size: D.7 x H.6 cm
Quantity: 6



SKU: WBR.006.04
Scent: Green Tea Time
Size: D.7 x H.6 cm
Quantity: 6

Use this sign in your shop to show your customers which bracelet goes with which candle.



Inside the giftbox of these soy candles, you'll find this special note with wish-bracelet



SKU: WBR.006.02
Scent: Minty Bamboo
Size: D.7 x H.6 cm
Quantity: 6



SKU: WBR.006.06
Scent: Fresh Cotton
Size: D.7 x H.6 cm
Quantity: 6



SKU: WBR.006.05
Scent: Fig's Delight
Size: D.7 x H.6 cm
Quantity: 6



Have fun in the sun!

- SOY CANDLES -



SKU: XBG.9010.MBL1
Scent: Warm Cashmere
Size: D.9 x H.10 cm
Quantity: 4



SKU: XBG.1012.MBL5
Scent: Warm Cashmere
Size: D.10 x H.12 cm
Quantity: 4

BESTSELLER



SKU: XBG.9010.MGO2
Scent: Silky Tonka
Size: D.9 x H.10 cm
Quantity: 4



SKU: XBG.1012.MGO6
Scent: Silky Tonka
Size: D.10 x H.12 cm
Quantity: 4



SKU: XBG.9010.SBL3
Scent: Warm Cashmere
Size: D.9 x H.10 cm
Quantity: 4



SKU: XBG.1012.SBL7
Scent: Warm Cashmere
Size: D.10 x H.12 cm
Quantity: 4



SKU: XBG.9010.SGO4
Scent: Silky Tonka
Size: D.9 x H.10 cm
Quantity: 4



SKU: XBG.1012.SGO8
Scent: Silky Tonka
Size: D.10 x H.12 cm
Quantity: 4



ONLY DO WHAT
YOUR HEART TELLS YOU

- PRINCESS DIANA



Hold on me. I got you!

- SOY CANDLES -
WITH CRYSTAL ROCK INSIDE



SKU: GL.CR.001.01
Scent: Warm Cashmere
Size: D.11 x H.6 cm
Quantity: 4

Rainbow Fluorite

The Rainbow Fluorite inside this candle helps you with your focus, memory and clears your mind. As a result, you are better able to process information and draw connections.



SKU: GL.CR.001.03
Scent: Amber's Secret
Size: D.11 x H.6 cm
Quantity: 4

Clear Quartz

Clear Quartz helps you accomplish your goals. It supercharges your intentions and amplifies your inner strength to make something happen.



SKU: GL.CR.001.04
Scent: Green Tea Time
Size: D.11 x H.6 cm
Quantity: 4

Rose Quartz

Rose Quartz makes sure that l.o.v.e. in its broadest sense is coming your way... and who doesn't like to have some extra love in his or her life?



SKU: GL.CR.001.02
Scent: Minty Bamboo
Size: D.11 x H.6 cm
Quantity: 4

Green Aventurine

The Green Aventurine brings you luck. Whether you can use some luck in wealth, love, friendship or growth, this crystal has got your back.



SKU: GL.CR.001.06
Scent: Fresh Cotton
Size: D.11 x H.6 cm
Quantity: 4

Lemon Jade

Don't we all like to have a bit of extra luck and prosperity in our lives? Well, this rock brings you exactly that in addition to harmony and balance. Lemon Jade is a rock that rocks for someone who rocks just as much.



SKU: GL.CR.001.05
Scent: Fig's Delight
Size: D.11 x H.6 cm
Quantity: 4

Amethyst

Translated to Greek this means 'not intoxicated'. Accidentally drank a few wines too many? Not a problem because this rock helps you to detoxify your body. Additionally, the Amethyst gives you soothing dreams, clarity and peacefulness to the waking mind.





Light my fire

MATCHES

These matches are environmentally friendly and don't contain sulfur but an iron-phosphorus compound. Additionally, matches are easily recyclable and biodegradable. Unlike lighters, matches are made from wood which is biodegradable. This way, they won't contribute to the growing waste problem in the world. The glass jar can be re-used for numerous things such as a small flower vase.

Strike at the bottom of the jar



SKU: MTCH.BL
Size bottle: D.6 x H.10.5 cm
Content: 80 matches
Quantity: 8



SKU: MTCH.PI
Size bottle: D.6 x H.10.5 cm
Content: 80 matches
Quantity: 8



SKU: MTCH.GRN
Size bottle: D.6 x H.10.5 cm
Content: 80 matches
Quantity: 8



SKU: MTCH.WH
Size bottle: D.6 x H.10.5 cm
Content: 80 matches
Quantity: 8



SKU: MTCH.SND
Size bottle: D.6 x H.10.5 cm
Content: 80 matches
Quantity: 8



SKU: MTCH.GLD
Size bottle: D.6 x H.10.5 cm
Content: 80 matches
Quantity: 8



- SOY CANDLES -



SKU: GL.MTC.XS.BLK
Scent: Warm Cashmere
Size: D7.5 x H.5. cm
Quantity: 6



SKU: GL.MTC.XS.LGRY
Scent: Amber's Secret
Size: D.7.5 x H.5 cm
Quantity: 6



SKU: GL.MTC.XS.PI
Scent: Green Tea Time
Size: D.7.5 x H.5 cm
Quantity: 6



SKU: GL.MTC.XS.GRN
Scent: Minty Bamboo
Size: D.7.5 x H.5 cm
Quantity: 6



SKU: GL.MTC.XS.WH
Scent: Fresh Cotton
Size: D.7.5 x H.5 cm
Quantity: 6



SKU: GL.MTC.XS.SND
Scent: Fig's Delight
Size: D.7.5 x H.5 cm
Quantity: 6

Scented candles with wooden wick



SKU: GL.MTC.BL
Scent: Warm Cashmere
Size: D.9 x H.5 cm
Quantity: 4



SKU: GL.MTC.GRY
Scent: Amber's Secret
Size: D.9 x H.5 cm
Quantity: 4



SKU: GL.MTC.GRN
Scent: Minty Bamboo
Size: D.9 x H.5 cm
Quantity: 4



SKU: GL.MTC.WH
Scent: Fresh Cotton
Size: D.9 x H.5 cm
Quantity: 4



SKU: GL.MTC.SD
Scent: Fig's Delight
Size: D.9 x H.5 cm
Quantity: 4



- SOY CANDLES -



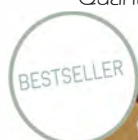
SKU: GL.MTC.XL.BL
Scent: Warm Cashmere
Size: D. 13 x H.8 cm
Quantity: 4



SKU: GL.MTC.XL.LGRY
Scent: Amber's Secret
Size: D. 13 x H.8 cm
Quantity: 4



SKU: GL.MTC.XL.GRN
Scent: Minty Bamboo
Size: D. 13 x H.8 cm
Quantity: 4



SKU: GL.MTC.XL.WH
Scent: Fresh Cotton
Size: D. 13 x H.8 cm
Quantity: 4



SKU: GL.MTC.XL.SND
Scent: Fig's Delight
Size: D. 13 x H.8 cm
Quantity: 4

RECYCLE

Recycling and repurposing have become vital practices in our modern world, aiming to reduce waste, conserve resources, and contribute to a more sustainable future. Among the many creative ways to give new life to everyday items, repurposing our candle containers, soap and match bottles, and reed diffusers for decorative and functional purposes stands out as a delightful and environmentally conscious endeavor. Why let a fun jar or bottle go to waste? Reuse our bottles as a vase for (dried) flowers or beautiful feathers. Or use an empty candle jar for storing your pens or make-up brushes. But also think of using it for serving nuts and olives in it. Or what are your thoughts on this double wall glass jar? It makes a perfect and trendy tea cup.





Responsible soy gives more joy

Founded in 2006 in Zürich, Switzerland, the RTRS (Round Table on Responsible Soy Association) is a non-profit organization that promotes cooperation between producers, suppliers, manufacturers, retailers, financial institutions, civil society organizations and other relevant actors. Its aim is not only sustainability of soy production itself throughout the world but also on social levels. In this respect, it follows the principles of:

Legal compliance and good business practices

•

Responsible labor conditions

•

Responsible community relations

•

Environmental responsibility, no deforestation

•

Good agricultural practices

My Flame Lifestyle is the first Dutch candle brand that's a member of RTRS and we encourage other brands to follow our footsteps. The soy we use for our candles comes entirely from an RTRS certified producer.

wooden wick candles

- SOY CANDLES -

BESTSELLER



SKU: GL.CO.BL
Scent: Warm Cashmere
Size: D.8 x H.9 cm
Quantity: 4



SKU: GL.CO.LGRY
Scent: Amber's Secret
Size: D.8 x H.9 cm
Quantity: 4



SKU: GL.CO.PI
Scent: Green Tea Time
Size: D.8 x H.9 cm
Quantity: 4



SKU: GL.CO.GRN
Scent: Minty Bamboo
Size: D.8 x H.9 cm
Quantity: 4



SKU: GL.CO.WH-I
Scent: Fresh Cotton
Size: D.8 x H.9 cm
Quantity: 4



SKU: GL.CO.SA
Scent: Fig's Delight
Size: D.8 x H.9 cm
Quantity: 4

2-wick candles



SKU: GL.1010.BL
Scent: Warm Cashmere
Size: D.10 x H.10 cm
Quantity: 4



SKU: GL.1010.LGRY
Scent: Amber's Secret
Size: D.10 x H.10 cm
Quantity: 4



SKU: GL.1010.PI
Scent: Green Tea Time
Size: D.10 x H.10 cm
Quantity: 4



SKU: GL.1010.GRN
Scent: Minty Bamboo
Size: D.10 x H.10 cm
Quantity: 4



SKU: GL.1010.WH
Scent: Fresh Cotton
Size: D.10 x H.10 cm
Quantity: 4



SKU: GL.1010.SND
Scent: Fig's Delight
Size: D.10 x H.10 cm
Quantity: 4



Only one phone call away



- SOY CANDLES -



SKU: GL.RND.WH
Scent: Fresh Cotton
Size: D.7 x H.12 cm
Quantity: 4



SKU: GL.RND.SD
Scent: Amber's Secret
Size: D.7 x H.12 cm
Quantity: 4



SKU: GL.RND.PI
Scent: Green Tea Time
Size: D.7 x H.12 cm
Quantity: 4

- SOY CANDLES -



SKU: GL.SQ.BL
Scent: Warm Cashmere
Size: L.7 x B.7 x H.9 cm
Quantity: 4



SKU: GL.SQ.WH
Scent: Fresh Cotton
Size: L.7 x B.7 x H.9 cm
Quantity: 4



SKU: GL.SQ.SND
Scent: Fig's Delight
Size: L.7 x B.7 x H.9 cm
Quantity: 4



SKU: GL.MOCK.BL
Scent: Warm Cashmere
Size: D.5 x H.8 cm
Quantity: 8



SKU: GL.MOCK.LG
Scent: Amber's Secret
Size: D.5 x H.8 cm
Quantity: 8



SKU: GL.MOCK.PI
Scent: Green Tea Time
Size: D.5 x H.8 cm
Quantity: 8



SKU: GL.MOCK.WH-1
Scent: Fresh Cotton
Size: D.5 x H.8 cm
Quantity: 8



SKU: GL.MOCK.SND
Scent: Fig's Delight
Size: D.5 x H.8 cm
Quantity: 8

- SOY CANDLES -



SKU: GL.WW.BL
Scent: Warm Cashmere
Size: D.9 x H.5 cm
Quantity: 4



SKU: GL.WW.GRY
Scent: Amber's Secret
Size: D.9 x H.5 cm
Quantity: 4



SKU: GL.WW.PI
Scent: Green Tea Time
Size: D.9 x H.5 cm
Quantity: 4

BESTSELLER



SKU: GL.WW.GRN
Scent: Minty Bamboo
Size: D.9 x H.5 cm
Quantity: 4



SKU: GL.WW.WH
Scent: Fresh Cotton
Size: D.9 x H.5 cm
Quantity: 4



SKU: GL.WW.SND
Scent: Fig's Delight
Size: D.9 x H.5 cm
Quantity: 4



SKU: GL.XL.GRN
Scent: Minty Bamboo
Size: D.13 x H.8 cm
Quantity: 3



SKU: GL.XL.PI
Scent: Green Tea Time
Size: D.13 x H.8 cm
Quantity: 3



Home is where the furry socks are

- SOY CANDLES -



SKU: tray.24.mini
Size: L.29.5 x B.20 x H.21.5 cm
Quantity: 2
1 tray contains 24 candles



SKU: mini.3.goodluck.wh
Scent: Fresh Cotton
Size: D.4.2 x H.3.8 cm
Quantity: 12



SKU: mini.4.love.lg
Scent: Amber's Secret
Size: D.4.2 x H.3.8 cm
Quantity: 12



SKU: mini.2.xxx.pi
Scent: Green Tea Time
Size: D.4.2 x H.3.8 cm
Quantity: 12



SKU: mini.6.hug.snd
Scent: Fig's Delight
Size: D.4.2 x H.3.8 cm
Quantity: 12



SKU: mini.5.hooray.grn
Scent: Minty Bamboo
Size: D.4.2 x H.3.8 cm
Quantity: 12



SKU: mini.1.thx.dg
Scent: Persian Pomegranate
Size: D.4.2 x H.3.8 cm
Quantity: 12

Maximize your sales

PLACE A TRAY WITH THESE MINI CANDLES
ON YOUR COUNTER AND MAXIMIZE YOUR
CUSTOMERS' IMPULSE PURCHASES.



SKU: tray.24.miniT
Size: L.34 x B.24 x H.26 cm
Quantity: 1
1 tray contains 24 candles



SKU: miniT.3.unplug.wh
Scent: Fresh Cotton
Size: D.4.5 x H.5 cm
Quantity: 12



SKU: miniT.4.joy.lg
Scent: Amber's Secret
Size: D.4.5 x H.5 cm
Quantity: 12



SKU: miniT.2.beau.pi
Scent: Green Tea Time
Size: D.4.5 x H.5 cm
Quantity: 12



SKU: miniT.6.strength.snd
Scent: Fig's Delight
Size: D.4.5 x H.5 cm
Quantity: 12



SKU: miniT.5.cheers.grn
Scent: Minty Bamboo
Size: D.4.5 x H.5 cm
Quantity: 12



SKU: miniT.1.wow.dg
Scent: Persian Pomegranate
Size: D.4.5 x H.5 cm
Quantity: 12



Thx! Cheers! -xxx-

- SOY CANDLES -



SKU: TIN.XL.BL.HOME
Scent: Warm Cashmere
Size: D.12 x H.8 cm
Quantity: 3



SKU: TIN.XL.DGRY.CON
Scent: Persian Pomegranate
Size: D.12 x H.8 cm
Quantity: 3



SKU: TIN.XL.PI.RELAX
Scent: Green Tea Time
Size: D.12 x H.8 cm
Quantity: 3



SKU: TIN.XL.GRN.MOM
Scent: Minty Bamboo
Size: D.12 x H.8 cm
Quantity: 3



SKU: TIN.XL.WH.WOW
Scent: Fresh Cotton
Size: D.12 x H.8 cm
Quantity: 3



SKU: TIN.XL.SND.GLD
Scent: Fig's Delight
Size: D.12 x H.8 cm
Quantity: 3



SKU: TIN.M.BL.HAPPYALWAYS
Scent: Warm Cashmere
Size: D.8 x H.5 cm
Quantity: 4



SKU: TIN.M.GRN.HAPPYON
Scent: Minty Bamboo
Size: D.8 x H.5 cm
Quantity: 4



- SOY CANDLES -



SKU: TIN.XS.BL-1
Scent: Warm Cashmere
Size: D.6 x H.4 cm
Quantity: 12



SKU: TIN.XS.LGRY-1
Scent: Amber's Secret
Size: D.6 x H.4 cm
Quantity: 12



SKU: TIN.XS.PI-1
Scent: Green Tea Time
Size: D.6 x H.4 cm
Quantity: 12



SKU: TIN.XS.GRN-1
Scent: Minty Bamboo
Size: D.6 x H.4 cm
Quantity: 12



SKU: TIN.XS.WH-1
Scent: Fresh Cotton
Size: D.6 x H.4 cm
Quantity: 12



SKU: TIN.XS.SND-1
Scent: Fig's Delight
Size: D.6 x H.4 cm
Quantity: 12



BATH & BODY

Discover the ultimate collection of care products designed to elevate your store's offerings. Our line includes body wash bars and scrub for in the shower, indulgent bath salts, nourishing hand soaps, and soothing lip balms and hand creams. Each product is crafted to be gentle on the skin, infused with beautiful fragrances, and completely vegan. A perfect match when you're looking for ethical, trendy self care items with a high gift level.



It's a foam-tastic kind of thing



- HAND SOAP -



SKU: SO.LGRY.06
Scent: Amber's Secret
Content: 50 gr.
Quantity: 8

NEW



SKU: SO.GRN.03
Scent: Minty Bamboo
Content: 50 gr.
Quantity: 8



SKU: SO.PI.05
Scent: Green Tea Time
Content: 50 gr.
Quantity: 8



SKU: SO.SND.04
Scent: Fig's Delight
Content: 50 gr.
Quantity: 8

BESTSELLER



SKU: SO.WH.01
Scent: Fresh Cotton
Content: 50 gr.
Quantity: 8



- VEGAN HAND SOAP & HAND CREAM -



WY.GBSH.021.03
Scent: Amber's Secret & Hibiscus Paradise
Content: 50 gr & 50 ml
Quantity: 4



WY.GBSH.021.02
Scent: Minty Bamboo & Fig Deluxe
Content: 50 gr & 50 ml
Quantity: 4



WY.GBSH.021.06
Scent: Fresh Cotton & Hibiscus Paradise
Content: 50 gr & 50 ml
Quantity: 4

- HAND SOAP -



SKU: SO.GB350.LGRY-1
Scent: Amber's Secret
Content: 350 ml
Quantity: 6



SKU: SO.GB350.GRN
Scent: Minty Bamboo
Content: 350 ml
Quantity: 6



SKU: SO.GB350.PI
Scent: Green Tea Time
Content: 350 ml
Quantity: 6



SKU: SO.GB350.WH
Scent: Fresh Cotton
Content: 350 ml
Quantity: 6



- BODY WASH BAR -



SKU: WWB.013.02
Scent: Lemon Verbena
Content: 128 gr.
Quantity: 8



SKU: WWB.013.04
Scent: Oriental Vanilla
Content: 128 gr.
Quantity: 8



SKU: WWB.013.06
Scent: Cashmere Bliss
Content: 128 gr.
Quantity: 8



SKU: WWB.013.05
Scent: Black Orchid
Content: 128 gr.
Quantity: 8

A delightful body wash bar with an integrated sponge and featuring a convenient elastic strap at the top. It also comes with an organic wooden tray for a stylish look.



Turn your bathroom into a spa

- VEGAN BODY SCRUB -

Vegan body scrub for the shower

A 100% vegan and cruelty-free body scrub for a wonderfully soft skin. The skin is effectively exfoliated by the efficient and natural sugar particles, leaving your skin feeling like a polished peach. The tube is made of 100% recycled plastic.

How to use: Rub 1 or 2 balls between your hands and massage over your body. Rinse liberally with warm water.

PS Check out the scents! Each one of them is truly amazing.



Sweet as Sugar



Let's have a ball



SKU: WSS.012.03
Scent: Flower Fusion
Content: 42 gr.
Quantity: 6



SKU: WSS.012.02
Scent: Lemon Verbena
Content: 42 gr.
Quantity: 6

BESTSELLER



SKU: WSS.012.04
Scent: Oriental Vanilla
Content: 42 gr.
Quantity: 6



SKU: WSS.012.05
Scent: Black Orchid
Content: 42 gr.
Quantity: 6



SKU: WSS.012.06
Scent: Cashmere Bliss
Content: 42 gr.
Quantity: 6



SKU: WSS.DIS.04
Content: 6 X 5 Tubes
Size: W. 30 x D. 30 x H. 21 cm
Quantity: 1

- BATH SALT -



SKU: SO.BS.01.LGRY
Scent: Amber's Secret
Content: 180 gr.
Quantity: 8



SKU: SO.BS.02.GRN
Scent: Minty Bamboo
Content: 180 gr.
Quantity: 8



SKU: SO.BS.04.SND
Scent: Fig's Delight
Content: 180 gr.
Quantity: 8



SKU: SO.BS.05.WH
Scent: Fresh Cotton
Content: 180 gr.
Quantity: 8

Bath Salt & Organic Candle

SPA KIT

Run a hot bath, sprinkle the natural bath salt in the water and light the scented soy candle. The salt detoxes your body, soothes the muscles and can be used as a scrub for a radiant, smooth skin. The fragrance relaxes your mind while sharpening your mental focus. All this combined will make you feel re-born.



SKU: SO.BS.GB.07.LGRY
Scent: Amber's Secret
Content: 180 gr. salt and 40 gr. wax
Quantity: 4



SKU: SO.BS.GB.09.SND
Scent: Fig's Delight
Content: 180 gr. salt and 40 gr. wax
Quantity: 4

- BATH BOMBS -

A.K.A. CHILL PILLS



SKU: SO.BP.LGRY
Scent: Amber's Secret
Content: 128 gr.
Quantity: 6



SKU: SO.BP.GRN
Scent: Minty Bamboo
Content: 128 gr.
Quantity: 6



SKU: SO.BP.PI
Scent: Green Tea Time
Content: 128 gr.
Quantity: 6



SKU: SO.BP.SND
Scent: Fig's Delight
Content: 128 gr.
Quantity: 6



SKU: SO.BP.WH
Scent: Fresh Cotton
Content: 128 gr.
Quantity: 6



Some rocks for a lady who rocks

- HAND CREAM AND LIP BALM -



SKU: LH.GB.011.03
Scent: Hibiscus Paradise & Sweet Rose
Content: 50 ml & 30 ml
Quantity: 4



SKU: LH.GB.011.04
Scent: Hibiscus Paradise & Sweet Rose
Content: 50 ml & 30 ml
Quantity: 4



SKU: LH.GB.011.02
Scent: Fig Deluxe & Persian Pomegranate
Content: 50 ml & 30 ml
Quantity: 4



SKU: LH.GB.011.06
Scent: Hibiscus Paradise & Persian Pomegranate
Content: 50 ml & 30 ml
Quantity: 4



SKU: LH.GB.DISP
Content: 5 x 4 giftbags
Size: W.40 x D.40 x H.70 cm



Women's essentials

- HAND CREAM AND LIP BALM -



SKU: LB.010.03
Scent: Sweet Rose
Content: 30 ml
Quantity: 8



SKU: HC.009.03
Scent: Hibiscus Paradise
Content: 50 ml
Quantity: 8



SKU: LB.010.04
Scent: Sweet Rose
Content: 30 ml
Quantity: 8



SKU: HC.009.04
Scent: Hibiscus Paradise
Content: 50 ml
Quantity: 8



SKU: LB.010.02
Scent: Persian Pomegranate
Content: 30 ml
Quantity: 8



SKU: HC.009.02
Scent: Fig Deluxe
Content: 50 ml
Quantity: 8



SKU: LB.010.06
Scent: Persian Pomegranate
Content: 30 ml
Quantity: 8



SKU: HC.009.06
Scent: Hibiscus Paradise
Content: 50 ml
Quantity: 8



Display these fun tubes in this spinning carousel. With its small size, it easily fits on your counter to let these babies fly out the door.

Size: dia 45 x 50 cm
SKU: LB.HC.DIS.03

HOME FRAGRANCES

Our home fragrances are divided into 2 categories; fragrance sticks and room sprays. These home fragrances complement each other and our candles to create an atmosphere for you to relax in. Every corner of your home will smell divine with these fun designs. Place the fragrance sticks in any room for a continuous scent throw and use our homespray when you want an immediate extra kick of Cashmere Comfort, Fresh Lotus, Flower Bomb or one of our other favorite fragrances.

- ROOM SPRAY -



SKU: RS.BL.CC
Scent: Cashmere Comfort
Content: 100 ml
Quantity: 4



SKU: RS.WH.FL
Scent: Fresh Lotus
Content: 100 ml
Quantity: 4



SKU: RS.PI.US
Scent: Urban Suede
Content: 100 ml
Quantity: 4



SKU: RS.SND.FD.LITTLE
Scent: Fig Deluxe
Content: 100 ml
Quantity: 4



SKU: RD.BL.CC.CHIQUE
Scent: Cashmere Comfort
Content: 100 ml
Quantity: 4



SKU: RD.XL.BL.CC.DOLCE
Scent: Cashmere Comfort
Content: 190 ml
Quantity: 3



SKU: RD.WH.FL.HAPPY
Scent: Fresh Lotus
Content: 100 ml
Quantity: 4



SKU: RD.XL.WH.FL.CREME
Scent: Fresh Lotus
Content: 190 ml
Quantity: 3

- FRAGRANCE STICKS -



SKU: RD.GR.FB.RELAX
Scent: Flower Bomb
Content: 100 ml
Quantity: 4



SKU: RD.GRN.BB.LAZY
Scent: Botanical Bamboo
Content: 100 ml
Quantity: 4



SKU: RD.SND.FD.THANK
Scent: Fig Deluxe
Content: 100 ml
Quantity: 4



SKU: RD.PI.US.MAGIC
Scent: Urban Suede
Content: 100 ml
Quantity: 4



The re-cycle of life

Let the scent guide your



FRAGRANCE LIST

Welcome to the captivating fragrance list of My Flame Lifestyle, where the essence of elegance is captured in every scent. Renowned for our signature soft and beautiful fragrances, we invite you to embark on a sensory journey like no other. Our collection is the result of a harmonious collaboration with a sophisticated and authentic perfume house nestled in the picturesque landscapes of the South of France.

Indulge in the exquisite craftsmanship that defines My Flame Lifestyle, and experience the seamless fusion of nature's beauty and perfumery expertise, beginning from fresh and flowery to a more oriental and woody basenote.

- CANDLES & SOAP -

Green Tea Time

Did you know green tea has the characteristics to eliminate unpleasant odours? It's like a natural air freshener. This divine mix of pure green tea and bamboo gives your home a natural, fresh scent. Accompanied by floral accents such as calming rose and lilies, this beautiful mix makes it a fresh and soft fragrance and has achieved popularity throughout.

Fresh Cotton

A soft and light fragrance that makes your environment smell like it's just been in the washing machine. A fresh, pure and comfortable mix of amber, citrus, lily, jasmine and with a soft hint of musk. With this fragrance, you'll never have to miss that feeling of freshly washed clothes.

Bella Citronella

Citronella with a hint of vanilla which makes it an even stronger repellent for mosquitoes.

Lavender Fields

Lavender Fields is like a breath of fresh, floral air that instantly transports you to a sun-kissed meadow. It's your go-to for that peaceful, dreamy vibe whenever you need to unwind and chill.

Relaxing Chamomile

Unwind with the soothing embrace of Relaxing Chamomile, where gentle floral notes meet a calming herbal twist. It's like a cozy blanket of serenity, turning any moment into a peaceful retreat.

Minty Bamboo

If you're into fresh bamboo scents, you're at the right place. This is a fresh scent with watery, flowery and complex notes, blended with a modern heart of bamboo. A mix of apple, mint, bamboo, lilies, pansies and tuberose.

Fig's Delight

From living room to restroom and from kitchen to bathroom. This fragrance is for your entire house. You will never get enough of this fine sweet aroma of fresh figs in combination with the woody though freshening kick of copaiba. A favorite fragrance of many.

Warm Cashmere

This warm combination is the perfect mix of fresh flowers, golden peach, sensual cashmere, musk and soft vanilla. Without a doubt, this is the warmest mix of our favorite ingredients and is the most wanted fragrance by our customers.

Calming Sandalwood

Calming Sandalwood is your ticket to zen, where warm, woody notes wrap you in a soothing embrace, grounding your soul. Perfect for those moments when you need to vibe with serenity and let the stress melt away.

Amber's Secret

A strong, delightful and sweet fragrance. It has a sexy mix of amber, vanilla, musk and roses with patchouli floating in the back. Amber's secret goes perfectly well with a cozy night.

Unconditional

The scent, especially designed for our love collection. Unconditional is a beautiful sultry scent as a tribute to women. The essence of this scent is vanilla, nectar of cassis and softer notes of apricot. Roses give the scent a richer, flowery note, while the patchouli makes it even more intense. The fragrance ends with a hint of caramelized musk.

Silky Tonka

A sensual, rich fragrance. Extravagance! The topnotes are tonkabean, vanilla and pear. A wonderful combination of sweet, fresh, softness, and further down the road you also find a little bit of spice.

- HOME FRAGRANCES -

Fresh Lotus

The lotus flower is a symbol of beauty, purity, and fertility. Lotus flowers are water-fresh, clean, and slightly powdery in nature. This fragrance has a fresh aquatic lotus scent with jasmine, lemon, ylang ylang and a hint of rose.

Botanical Bamboo

Green, fresh and clean. The perfect spa-like scent. It is a well-balanced scent with bamboo, bergamot, red grapefruit, jasmine, lily and wild grasses.

Urban Suede

This is a fresh fragrance that conveys exotic appeal. The provocative scent contains accords of jasmine, citrus, rose and pineapple infused with green tea which creates a sensuous feel.

Flower Bomb

An explosion of 1000 flowers with bergamot, jasmine, orange, blossom, patchouli, and a hint of vanilla. A very rich fragrance with alternating fresh and sweet notes.

Cashmere Comfort

The sheer scent inspired by the feel of cashmere upon a woman's skin. This fragrance is a warm blend of jasmine, golden peach, bergamot and musk with a lemony undertone.

- LIP BALM & HAND CREAM -

Hibiscus Paradise

The hibiscus scent is a tropical symphony, captivating the senses with its lush and exotic floral notes. Its sweet, slightly fruity undertones with juicy mandarin evokes visions of sun-kissed beaches and vibrant, blooming gardens, creating a fragrance that is both invigorating and enchantingly soothing.

Fig's Deluxe

Fig's Deluxe scent is an opulent symphony of luxurious notes, blending the velvety richness of ripe figs with decadent undertones of caviar, vanilla and amber.

Sweet Rose

Sweet Rose is a romantic and captivating fragrance that unfolds like a bouquet of freshly bloomed roses, with its delicate sweetness and subtle floral nuances. It embodies the essence of love and femininity.

Persian Pomegranate

Persian Pomegranate is an exotic olfactory journey, marrying the luscious sweetness of ripe pomegranates with a hint of citrusy brightness, evoking the allure of a Persian orchard in full bloom.

- BODY WASH BAR & BODY SCRUB -

Cashmere Bliss

Dive into the ultimate sensory adventure with this mesmerizing fusion of Cashmere, Patchouli, Cedar, Jasmine, Almond and a touch of Vanilla. This harmonious fragrance isn't just a scent; it's an experience that captures the very essence of allure and sophistication.

Black Orchid

Experience the initial burst of a sweet and dark vanilla, followed by a woody-musky body that is both warm and sensual. As it dries down, it reveals its powdery side, becoming even more irresistible and creamy. This inviting warm and spicy aroma with notes of Orchid, Bergamot, Cinnamon, Saffron, and Cloves will leave a long-lasting impression.

Oriental Vanilla

Let the velvety notes of Vanilla, Sandalwood, and Cashmere Wood caress your skin, leaving you with an irresistible and indulgent sensation. Transform your shower experience into a blissful ritual with this enchanting fragrance, designed to evoke an aura of sophistication and allure.

Lemon Verbena

Zestful and invigorating, this fragrance mingles notes of bright lemon, citrusy mandarin orange and aromatic verbena for a garden-fresh favorite. This is a fragrance long-loved and trusted for its ability to freshen up and keep things smelling pristine.

Flower Fusion

This captivating fragrance begins with a burst of zesty orange, mandarin, and bergamot. Then it unfolds into a luxurious bouquet of Turkish rose, jasmine, mimosa, and ylang-ylang. The sensual base combines patchouli, white musk, vanilla, vetiver, tonka bean, and opoponax for a warm, lasting embrace of elegance.



The smell of kisses, hugs & love

Presentation is



Ask your
sales representative
for the possibilities



DISPLAY - 7 SHELVES
Black frame with 7 shelves
Size: W.80 x D.40 x H.215 cm



DISPLAY - 4 SHELVES
Black frame with 4 shelves
Size: W.76 x D.40 x H.125 cm



SKU: LB.HC.DIS.03
Space for: 10 x 4 lip balm, idem for hand cream
Size: DIA.45 x H.50 cm

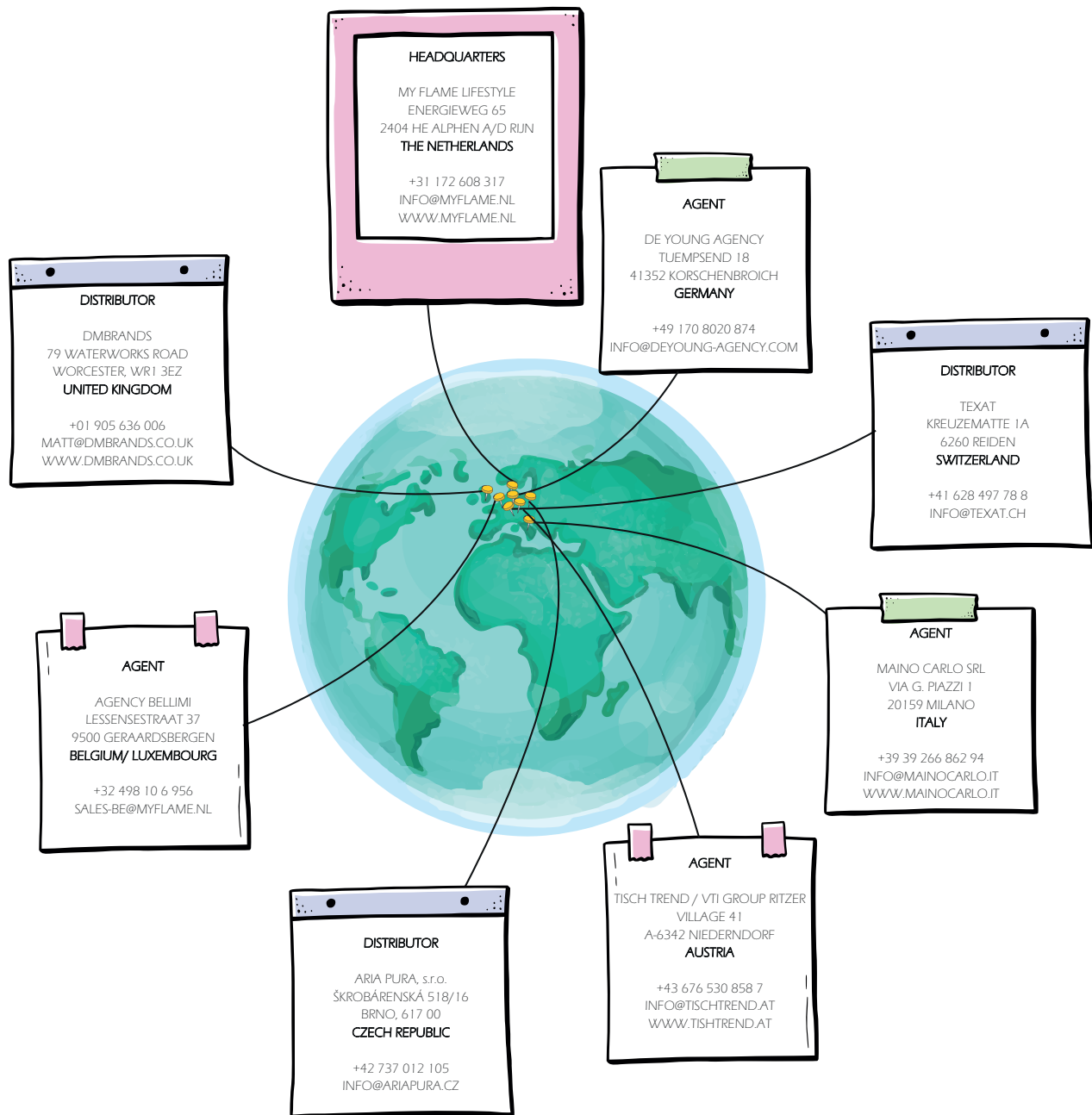


SKU: LH.GB.DIS
Space for: 5 x 4 giftbags
Size: DIA. 40 x H.70 cm



SKU: WSS.DIS.04
Space for: 6 X 5 tubes
Size: W. 30 x D. 30 x H. 21 cm

Let's Connect ...



www.instagram.com/my_flame_lifestyle



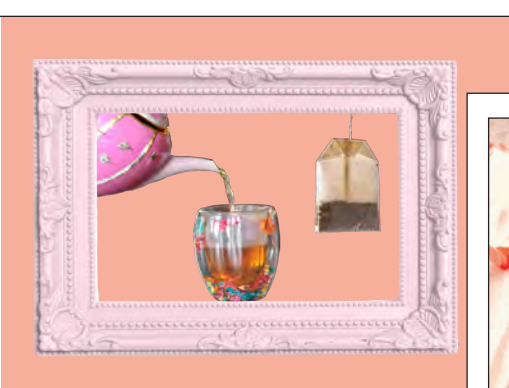
www.facebook.com/myflamelifestyle



Let's kiss



It's friends and wine time!



Pretty lady!



Take care, buddy



hip hooray!



It's a foam-tastic kind a thing